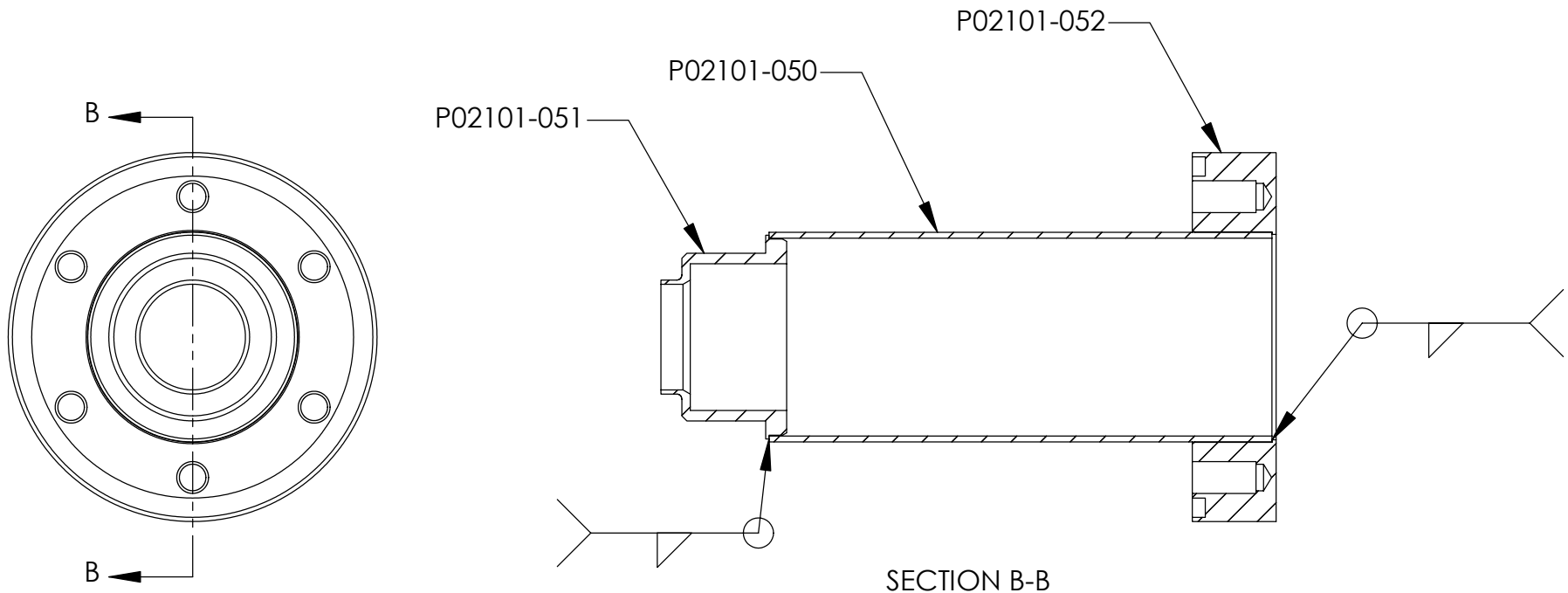


REVISIONS		
REV	DESCRIPTION	DATE



UNLESS OTHERWISE SPECIFIED:		<div>High Precision Devices</div> <div>1668 Valtec Lane, Suite C, Boulder, Colorado 80301 Phone: (303) 447-2558 Fax: (303) 447-2548 Web Site: www.hpd-online.com</div>				
DIMENSIONS ARE IN INCHES DECIMAL TOLERANCES: .X ±.030 .XX ±.015 .XXX ±.005						
ANGULAR TOL: ± 1° SURFACE ROUGHNESS:63/√		1668 Valtec Lane, Suite C, Boulder, Colorado 80301 Phone: (303) 447-2558 Fax: (303) 447-2548 Web Site: www.hpd-online.com				
INTERNAL AND EXTERNAL SURFACE INTERSECTIONS SHALL BE UNIFORMLY FINISHED WITH CHAMFER .005/.010 X 45° OR RADIUS .005/.010. CHAMFER ALL THREADED HOLES 110° OF MAJOR DIAMETER X 45°						
MATERIAL:		TITLE: p02101-235 flange assy, vacuum				
FINISH:		CONFIGURATION: -0 Default				
		SIZE A	QTY PER ASSM: 2	SCALE: 1:1	SHEET 1 OF 1	REV A
		DATE: 5/19/2004		DRAWN BY: C. Danaher		